

NEWS January 2009

Multimode Reader Mithras LB 940



Newsletter Topics

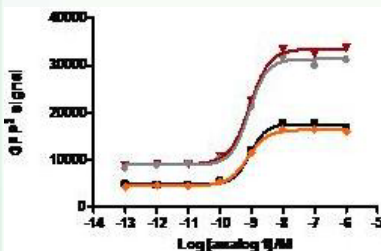
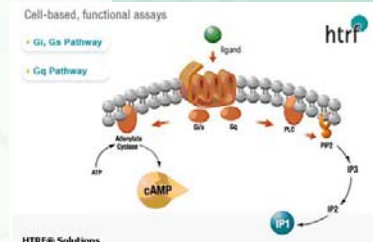
- Mithras at LabAutomation 2009
- Improved BRET performance
- Cisbio's HTplex™ successfully run on Mithras

[Learn more about the Mithras microplate reader](#)

Cisbio's HTplex™ performed on Mithras

The IP-One and cAMP HTplex™ assay is an HTRF® competitive immunoassay that uses Lumi4™-Terbium cryptate-labeled anti-IP1 MAb, cryptate-labeled anti-cAMP MAb, red dye-labeled IP1 and green dye-labeled cAMP. The assay has been successfully run on a Mithras LB 940 multimode reader equipped with HTRF® reading technology.

An application note is in preparation.



Improved BRET and BRET² performance on Mithras

Berthold Technologies has recently introduced high efficiency BRET (53431) and BRET² (53232) packages for improved performance. The new high efficiency packages increase the signal levels by 100 % enabling the detection of low receptor expression.

The Mithras is the multimode reader with the most outstanding BRET/BRET² performance.

Mithras at LabAutomation 2009

The Mithras multi mode reader will be presented with [BioSero's](#) lab automation solutions.

Come and visit the [BioSero](#) booth #137.



[Get in touch with Berthold Technologies](#)

www.Berthold.com/Bio