

Newsletter January 2010

LabAutomation Issue

Newsletter Topics

- ▶ **New Design of Newsletter**
- ▶ **Mithras and Centro now with Hudson Robotics**
- ▶ **Berthold on Facebook**
- ▶ **NightSHADE Plant Imager**
- ▶ **New Application & Technical Notes**
- ▶ **Recent Publications**

New Design

The Berthold Technologies Newsletter is now being issued with 2 new categories "New Application & Technical Notes" and "Recent Publications". We are happy to introduce these categories to provide you with even more and useful information.

Reader Integration into Hudson Robotics

Hudson Robotics has successfully integrated the Centro and the Mithras into their lab automation equipment. Hudson Robotics, one of the leading suppliers of microplate automation to life science research, has developed an easy-to-use automation capability for [Mithras](#) and [Centro](#) microplate readers.

See the link to the Technical Note below.

At [Lab Automation](#) 2010 taking place in Palm Springs 24th to 27th January the Mithras will be presented as the core reader in Hudson's automated workcell.

See us at Hudson Robotics booth #505.

Berthold on Facebook

Berthold Technologies has established a [Facebook page](#) with useful information about applications and products.

Have a look and let us know your thoughts.

Get in touch
with [Berthold
Technologies](#)

[www.
Berthold.com
/Bio](http://www.Berthold.com/Bio)

Upcoming Events:

**LabAutomation
2010**
Where Science, Technology and Industry Come Together

Palm Springs
January 24 - 27



 Find us on
Facebook

NightSHADE Plant Imager

Based on the experiences with the [NightOWL™](#) in vivo* imager Berthold Technologies has developed the new [NightSHADE](#) imaging system with plant research in mind.

For applications such as gene research, circadian rhythms, regulation of plant growth, stress tolerance and drug screening the NightSHADE will offer unique features for plant research.

- ▶ Choice between emCCD camera and deep cooled slow scan CCD camera
- ▶ LED-based plant illumination with daylight simulation
- ▶ 2nd camera for side-view imaging
- ▶ x-y table and rotating table for 360° viewing

New Application & Technical Notes

- ▶ Comparison of filter sets for BRET1 assays: beta-arrestin 2 recruitment to the vasopressin-2 receptor

[Go to download page](#)

- ▶ Integration of Mithras and Centro plate readers with Hudson Robotics PlateCrane

[Go to download page](#)

[Have a look at other Application Notes](#)

Recent Publications

- ▶ Non-invasive visualization of retinoblastoma growth and metastasis via bioluminescence imaging; Association for Research in Vision and Ophthalmology, doi:10.1167/iovs.08-3258

[Go to abstract](#)

- ▶ Improved donor/acceptor BRET couples for monitoring beta-arrestin recruitment to G protein-coupled receptors; Biotechnology Journal Volume 4 Issue 9, Pages 1337 - 1344

[Go to abstract](#)

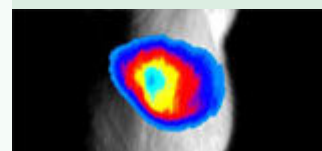
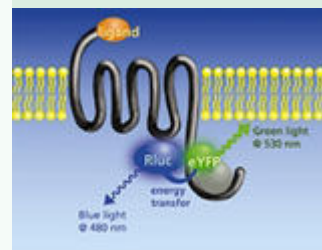
- ▶ Radioactive labeling of defined HEMA-based polymeric structures using [18F]FETos for in vivo imaging by Positron Emission Tomography; biomacromolecules, 2009, 10 (7), pp 1697-1703

[Go to abstract](#)

[Have a look at all publications](#)



[Learn more about NightSHADE](#)



* Some techniques for generating and/or detecting light in biological subjects are patented and may require licences from third parties. Users are advised to independently determine for themselves whether their activities infringe any valid patent.

[Unsubscribe from this newsletter](#)

BERTHOLD TECHNOLOGIES GmbH & Co KG

Headquarters/Germany +49 7081 177 200 • USA +1 865 483 1488 • UK +44 1582 76 1477

Japan +81 3 5825 3557 • Italy +39 03 9287 3064 • Switzerland +41 4 4871 2500

India +91 22 2765 5462 • BeNeLux +32 2251 6010 • France +33 1 3494 7900

China +86 10 8813 1974 • Austria +43 1 9142 2510 • Australia +61 3 9467 6277

Spain +34 91 361 4428 • Nordic +47 32 135 435 • Korea +82 31 776 0771

Please visit web page for other countries