

Newsletter July 2010

Express your genes!

In vivo and in vitro solutions from Berthold Technologies

Newsletter Topics

- ▶ **In vivo and in vitro solutions**
- ▶ **Berthold Technologies at Cold Spring Harbor, FESPB , Plant Biology & APS**
- ▶ **Application videos on JoVE**
- ▶ **Recent Publications**

In recent years, reporter genes have become an indispensable tool in the study of gene expression.

The purpose of the reporter gene assay is to measure the regulatory potential of an unknown DNA-sequence. This can be done by linking a promoter sequence to an easily detectable reporter gene such as that encoding for the firefly luciferase.

NightSHADE: dedicated in vivo plant imager

- ▶ Imaging of seedlings and whole plants
- ▶ Cooled CCD camera
- ▶ LED panels for daylight simulation
- ▶ Additional camera for side-view imaging

NightOWL™: universal in vivo imager

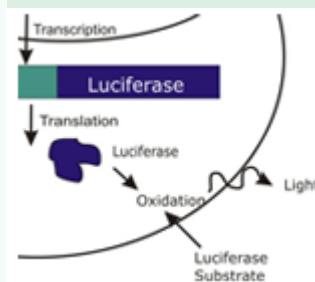
- ▶ Imaging of animals, plants, blots, gels
- ▶ Deep cooled slow scan CCD/emCCD cameras
- ▶ Anaesthesia system
- ▶ Various fluorescence excitation options

Lumat³: flexible tube luminometer

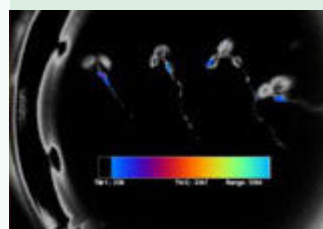
- ▶ Flash and glow luminescence measurements
Eppendorf cups and lumi vials

Get in touch
with [Berthold
Technologies](#)

[www.
Berthold.com
/Bio](http://www.Berthold.com/Bio)



[Learn more about
NightSHADE](#)



[Learn more about
NightOWL](#)

- ▶ Ratio calculation for Dual reporter assays
- ▶ 2 reagent injectors

CentroPRO: microplate luminometer

- ▶ Glow luminescence measurements
- ▶ Ratio calculation for Dual reporter assays
- ▶ Easy operation via ICE software
- ▶ High sensitivity: ~ 7.5 zmol firefly luciferase

Berthold Technologies present at Cold Spring Harbor, FESPB and Plant Biology

At the training course [Molecular Techniques in Plant Science](#) in the Cold Spring Harbor Laboratory, NY, USA an intensive overview of topics in plant physiology, biochemistry and development will be given. The [NightSHADE](#) plant imager will be used for measurements with transfected arabidopsis seedlings.

At the conference of the [Federation of European Societies of Plant Biology \(FESPB\)](#) in Valencia, Spain, Berthold Technologies will present its [NightSHADE](#) plant imager and [Centro](#) luminescence microplate reader.

Win an iPad at our booth 221 at the [Plant Biology 2010](#) show! The [NightSHADE](#) plant imaging system will be on display.

At the [APS \(The American Phytopathological Society\)](#) Annual Meeting we will show the [NightSHADE](#) plant imaging system.

Berthold Videos on JoVE

Two scientific videos are sponsored by Berthold Technologies and are freely accessible on JoVE (Journal of visualized Experiments):

- ▶ [Antibody Profiling by Luciferase Immunoprecipitation Systems \(LIPS\) with use of Centro luminometer](#)
- ▶ [Tracking Dynamics of Muscle Engraftment in Small Animals by in vivo Fluorescent Imaging with the use of NightOWL in vivo imaging system](#)

Recent Publications



[Learn more about Lumat³](#)



[Learn more about CentroPRO](#)

Upcoming Events:



Cold Spring Harbor, NY, USA
July 2 - 22



Valencia, Spain
July 4 - 9



Montreal, Canada
July 31 - August 4



Charlotte, NC, USA
August 7 - 11

[Find later events](#)



- ▶ A FRET-based microplate assay for human protein kinase CK2, a target in neoplastic disease; Journal of Enzyme Inhibition and Medicinal Chemistry, 2010; 25(2): 234-239

[Go to abstract](#)



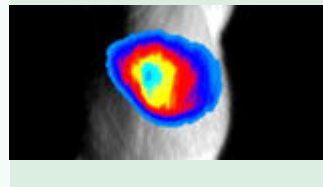
- ▶ Yersiniabactin Reduces the Respiratory Oxidative Stress Response of Innate Immune Cells; PLoS ONE December 2009 | Volume 4 | Issue 12 | e8240

[Go to abstract](#)



- ▶ Long-circulating DNA lipid nanocapsules as new vector for passive tumor targeting; Biomaterials 31 (2010) 321-329

[Go to abstract](#)



[Have a look at all publications](#)

* Some techniques for generating and/or detecting light in biological subjects are patented and may require licences from third parties. Users are advised to independently determine for themselves whether their activities infringe any valid patent.

[Unsubscribe from this newsletter](#)

BERTHOLD TECHNOLOGIES GmbH & Co KG

Headquarters/Germany +49 7081 177 200 • USA +1 865 483 1488 • UK +44 1582 76 1477

Japan +81 3 5825 3557 • Italy +39 03 9287 3064 • Switzerland +41 4 4871 2500

India +91 22 2765 5462 • BeNeLux +32 2251 6010 • France +33 1 3494 7900

China +86 10 8813 1974 • Austria +43 1 9142 2510 • Australia +61 3 9467 6277

Spain +34 91 361 4428 • Nordic +47 32 135 435 • Korea +82 31 776 0771

Please visit web page for other countries