

Gel-Documentation with NightHAWK LB 984 and Amphi-Stains



Ease of use and excellent performance

- Auto focus
- Auto exposure
- High resolution: 5 Mio pixels
- 3x zoom
- Live view
- Data base for image storing and archiving
- Washable key pad

[Learn more
about
NightHAWK
LB 984](#)

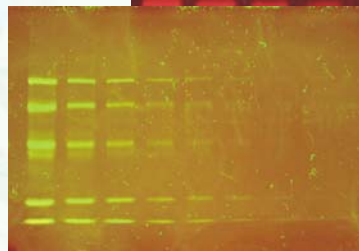
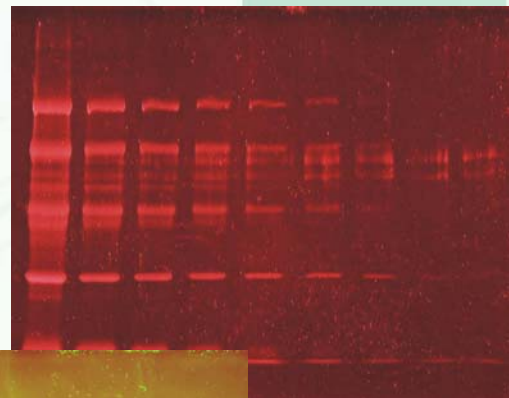
[Learn more
about Amphi
Stains](#)



BERTHOLD TECHNOLOGIES offers 3 products for protein staining in gels after electrophoretic separation:

AmphiBlue – visible staining
AmphiRed – fluorescence staining
AmphiGreen – fluorescence staining

A unique benefit of the Amphi stains – which have been developed by the University of Halle - is the reversibility of the staining offering the opportunity for an efficient de-staining of excised protein bands or spots for further investigation.



[Get in touch
with Berthold
Technologies](#)

[www.
Berthold.com
/Bio](http://www.Berthold.com/Bio)