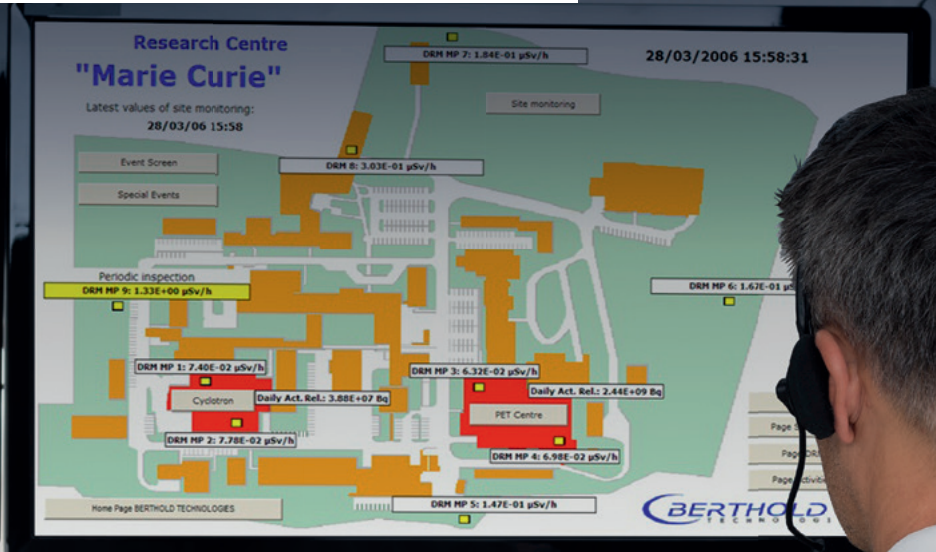
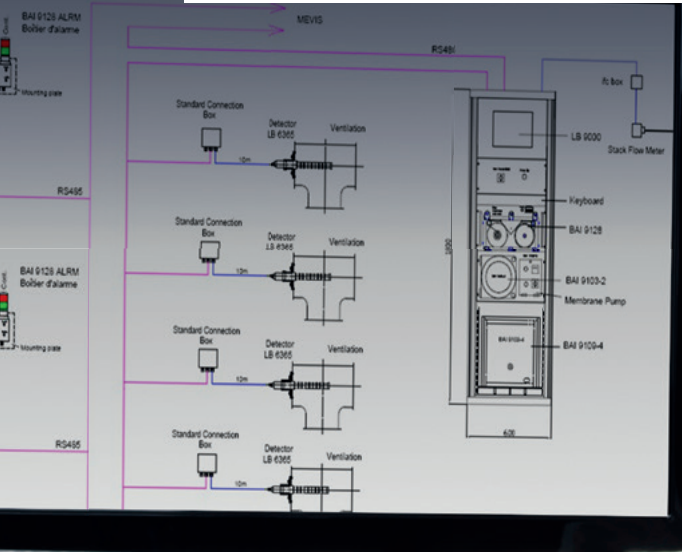


MEVIS

Measurement and Visualization Software

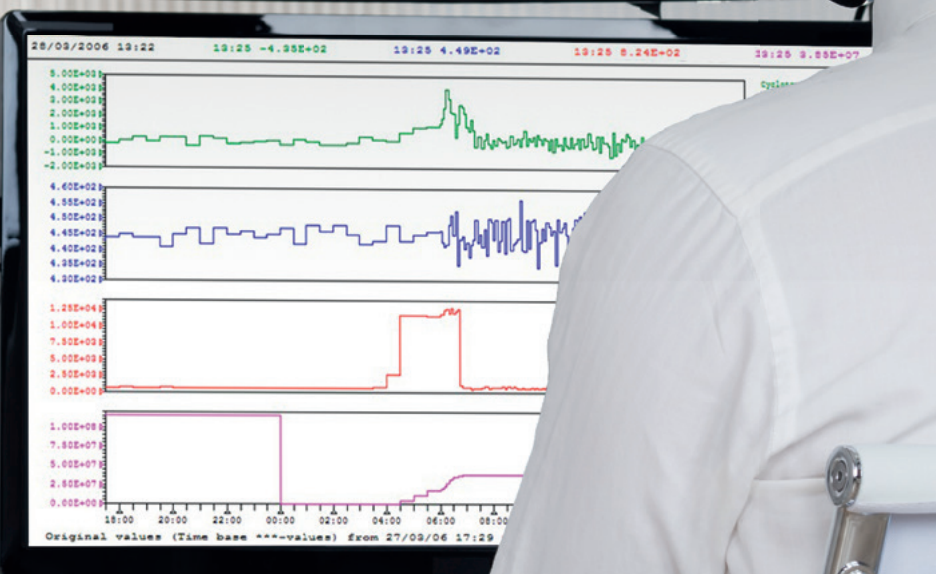


EZAG EURO-PET

		F	A
	0,341 kBq/m ³ (14.07.14 17:55)		
	4387 m/h (14.07.14 17:55)		
	37,8 cps (14.07.14 17:55)		
	39,8 cps (14.07.14 17:57)		
	198 kBq (14.07.14 17:55)		
	15,9 h (14.07.14 17:55)		
	198 kBq (14.07.14 17:56)		
	39,9 h (14.07.14 17:56)		
	0,188 µSv/h (14.07.14 17:56)		
	2,01 kBq/h (14.07.14 17:55)		
	17,6 cps (14.07.14 17:55)		
	1,82 kBq/h (14.07.14 17:55)		
	13,6 cps (14.07.14 17:55)		
	0,168 µSv/h (14.07.14 17:56)		
	0,168 µSv/h (14.07.14 17:56)		

Alarm status: Sammelalarm Ausfall (Green), Sammelalarm Alarm 1 (Green), Sammelalarm Alarm 2 (Red)

Legend: Ausfall (Yellow), Alarm 1 (Orange), Alarm 2 (Red)



RELIABLE COLLECTION OF MEASUREMENT DATA

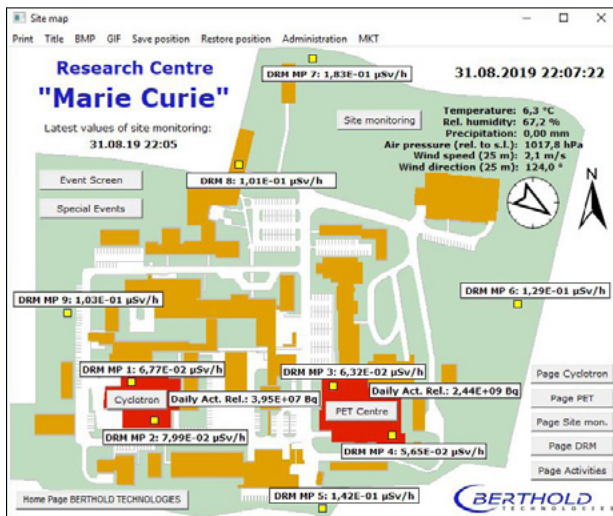
Overview of all measuring channels and alarm statuses

Concept

The **ME**asurement and **VI**sualization Software (MEVIS for short) is an excellent solution for archiving, visualising, evaluating and configuring the data volumes that your Berthold data loggers obtain from the corresponding probes and detectors.

The core of the programme is a measuring channel and status overview that contains all the necessary information about:

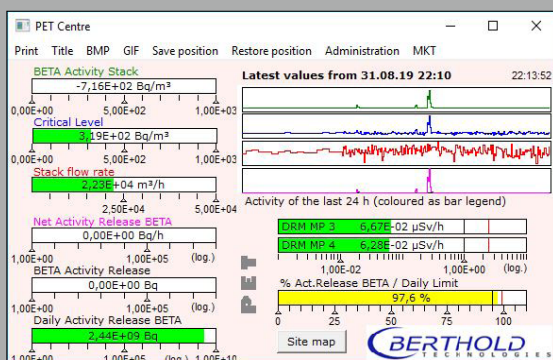
- Configuration (channels, status inputs, data paths)
- Conversion of data (measuring range, calibration factors, conversion tables)
- Conversion of data (measuring range, calibration factors, conversion tables)
- Data evaluation (limit values, alarm thresholds)
- Operating and error status of the measuring stations
- Correlation of different data sets



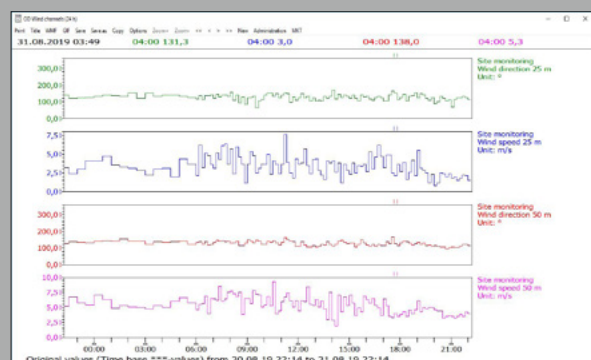
With the MEVIS software it is possible to create an overview map of your installation, which can show you all the measuring points in real time.

Basically, your Berthold data loggers store your measurement data locally. With automated request protocols, you can retrieve the data from all data loggers at selectable intervals and have them transferred to the central measuring station.

If an alarm or error limit value is exceeded, the users of the MEVIS system are reliably warned accordingly until this alarm is acknowledged by a user. The alarm function can be configured via e-mail, fax or SMS including current measured values.



A specific representation of a PET site with graphs and scales. Colour coding supports clarity.



The MEVIS graph display for any number of probes.

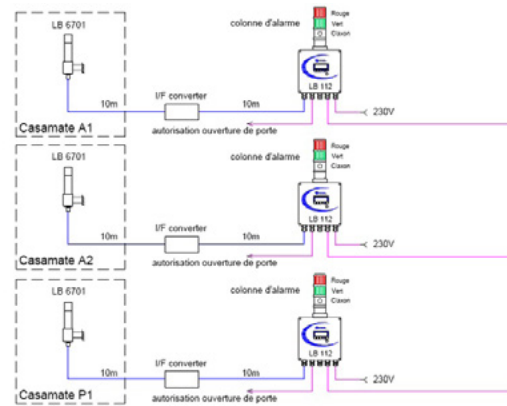
ANALYSIS AND EVALUATION WITH SUCCESS

Remote control and parameterisation accelerate your processes

Features

In addition to the main task of networking a large number of data loggers, MEVIS offers further features:

- Remote control of measuring channels
- Remote parameterisation of probes
- Password protected access to all sensitive areas
- Measurement data as well as status and error logs can be displayed in graphical or tabular form
- Object screen offers the possibility to display measurement information graphically on a floor plan
- Report function



The MEVIS software can be used to create measurement network diagrams, for example for a printout or project planning.

The report function allows you to define one or more report forms that can contain all data, calculated results, graphics and tables. When the function is called, MEVIS automatically creates a printout in the desired format and provides you with a file for word processing programmes such as Microsoft Word or LibreOffice.

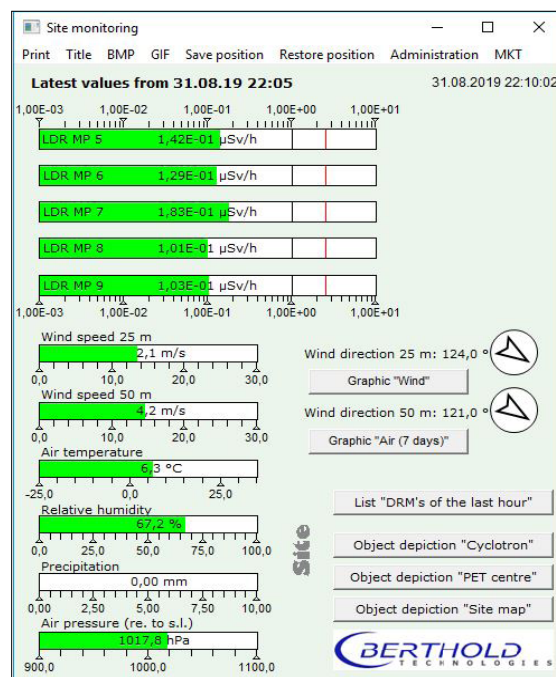
Available versions

	MEVIS Light	MEVIS 3.1
Number of users	Max. 3	Up to 99
Channels	Up to 10 per device → (30)	Up to 99 (up to 260 channels for special applications)
Communication	Serial and Ethernet via COM server	Serial, Ethernet via COM server, Ethernet via TCP/IP (F2C)
Software packages		
MKT	Display in tabular and graphical form only ✓	✓
MKO	✗	✓
MMZ	✗	✓
MSK	✗	✓

TECHNICAL SPECIFICATIONS

MEVIS Version 3.1 (Status 2020)

Connectivity	
Operating system	Windows 7, 10 (32 and 64 Bit) and Windows 11
Language(s)	English, German
LAN connection	RS 232, RS 422, RS 485, Ethernet via COM-Server, Ethernet (F ² C via TCP/IP)
Driver for communication with	LB 115, LB 5340, LB 9000 ADAM/ICP intelligent interfaces for other signals
External signals	SMS, E-Mail
Configuration	Stand-alone, Central station Master/Slave redundant configuration, Master – configuration with additional visualisation unit
Collection time interval	1 min – 24 h Polling interval
Ordering information	
MEVIS 3.1 Software package	42849-010
MEVIS Second licence for reg. user	42849-016
MEVIS Light	42849-014
MEVIS visualisation licence (without MKO)	42849-012



Overview display of a special installation with scales. This display is supplemented by integrated graphs for wind and air properties.

TRANSFORMING SCIENCE INTO SOLUTIONS



Experience and expertise are of great importance to be able to ensure safety-relevant measurements properly and reliably. With more than 70 years of experience in planning and design, installation and commissioning, calibration, documentation and service of radiation protection measurement systems, we continue to support our customers in their task to continuously optimize their work processes and to ensure the safety of the environment and personnel.

Berthold Technologies GmbH & Co. KG

Calmbacher Straße 22
75323 Bad Wildbad
GERMANY
phone: +49 7081 177 0
e-mail: nuclear@berthold.com
www.berthold.com/rp

© Berthold Technologies. All rights reserved. All trademarks are the property Berthold Technologies or their respective owners. Berthold Technologies reserves the right to implement technical improvements and/or design changes without prior notice.